

CLEAR COLLECTION™ INSTRUMENTS

Precise Adjustments For Better Results

Transform Smiles with Ease



Clear Collection™ Instruments

The Clear Collection™ Series consists of innovative instruments designed to accent, individualize and optimize the biomechanics of the “invisible” aligner experience with no heat required.

THE TEAR DROP

.....

678-800

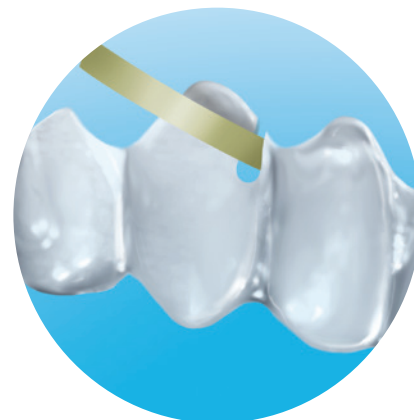
An instrument created to add a notch at the gingival margin of clear aligners anywhere elastic hooks are required within the arch. The Tear Drop provides a reservoir to hold the elastics in place as the aligner is seated. This permits easier manipulation of elastics by the patient.



The Tear Drop is positioned at an angle to the force that will be applied to the clear aligner by the elastics and the depth of the reservoir cut can be adjusted to need.



The Tear Drop elastic hooks can be used in tandem with bonded attachments to direct eruption of teeth into aligners.

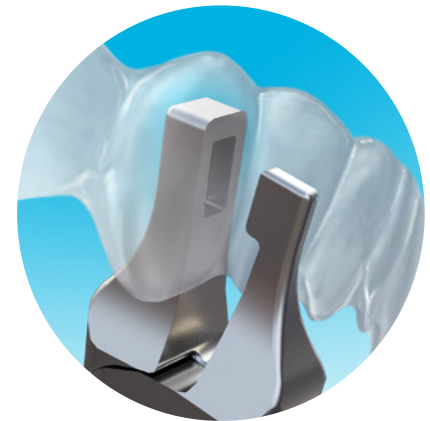


The Tear Drop elastic hook can be used to hook-up elastics of all types from Class II, Class III, Delta, Class I intraarch, for connection to TADS, and to produce extrusive forces for specific teeth.

THE VERTICAL

678-801

Correcting rotations is often a challenge with aligners. The Vertical emphasizes over-correction of rotations by producing an indentation at the mesial or distal line angles on the facial and/or lingual of a specific tooth. As an option, a rotational couple can also be created using vertical indents on facial and lingual surfaces on opposing sides of a tooth. The Vertical can also be used to produce an indent to produce a mild “nudge” to enhance resolution of in-and-out discrepancies. It can also be used to apply an indent immediately next to an attachment to enhance the adaptation of the aligner to angle between that attachment and the aligner.



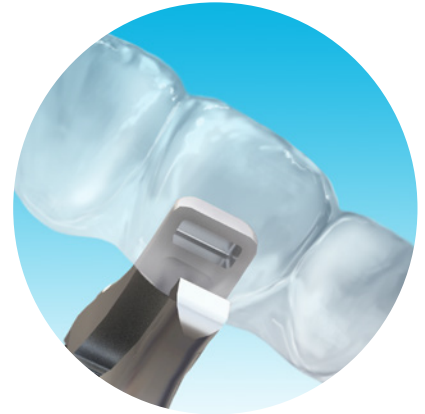
Impress an indentation with The Vertical along the mesial or distal line angle of a tooth to enhance rotational control.



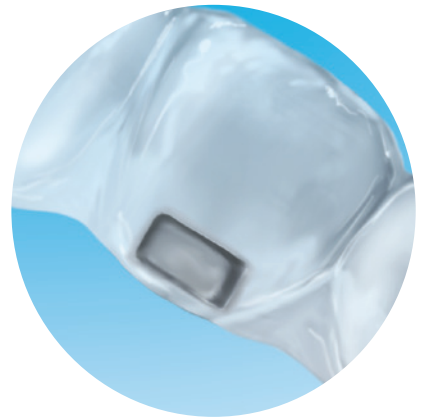
THE HORIZONTAL

678-802

The Horizontal instrument produces an indentation to accent individual root torque. It also serves a second purpose by enhancing retention of either clear aligners or retainers by placing an indent into a tooth's undercut or below a bonded attachment to enhance the contact of the aligner to that attachment.



Accent individual root torque by producing an indent at the gingival margin on either the buccal or lingual for any tooth in the arch form.

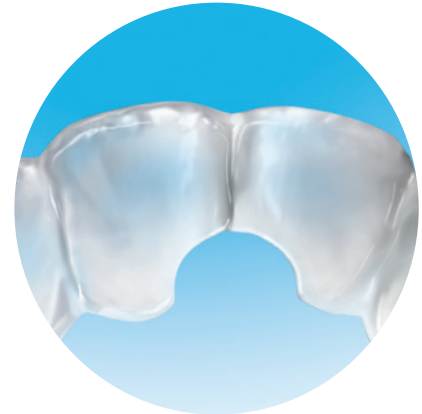


Increase clear aligner or retainer retentiveness by producing a horizontal indent into the undercut of specific teeth or just under an attachment.

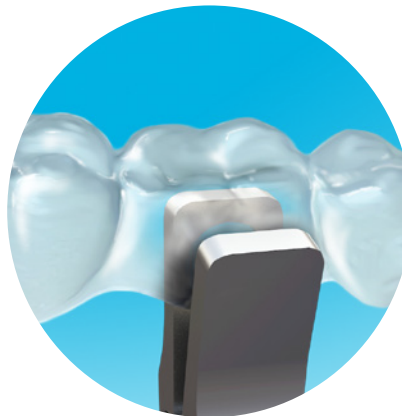
THE HOLE PUNCH

678-803

The Hole Punch is used to create half-moon cutouts for relief of clear aligners around bonded buttons used for elastics. No need to attempt to attach buttons to plastic trays. In addition, the Hole Punch can nip away plastic to provide soft tissue clearance to prevent aligner impingement of tissue.



The Hole Punch can also be used to relieve marginal plastic impingement or irritation of soft tissue anywhere along the aligners such as the incisive papilla.



The Hole Punch is positioned at the gingival margin with one-half of the "circle" of the punch over the plastic of the aligner.



The half moon cutout can be placed on any tooth where bonded buttons or brackets are added for elastics or other biomechanics.



THE SPOT

678-804

The Spot creates a tiny, rounded dimple for spot contacts to accent small individual tooth movements or added aligner retention. It is typically used to accent movements on any tooth that just needs a slight “nudge”. The Spot’s small depression placed adjacent to the gingival embrasures can also enhance the retentiveness of an aligner or retainer.



The Spot creates a tiny rounded dimple for spot contacts to accent small individual tooth movements or added retention.



The Spot’s small depression placed adjacent to the gingival embrasures can also enhance the retentiveness of an aligner or retainer.

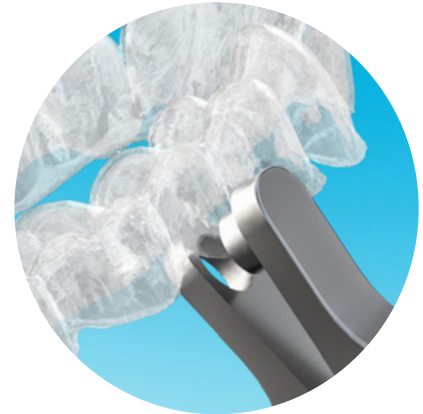
THE PETITE PUNCH

678-805

The Petite Punch cuts a 4.5mm half-moon cutout in an aligner for relief of the plastic around bonded buttons used for elastics. When only a small cut-out is required to provide clearance for buttons or hooks on the buccal but also on the lingual of any tooth in the aligner, especially for smaller teeth. The Petite Punch can also nip away plastic to provide soft tissue clearance to prevent aligner impingement of tissue.



- Original Hole Punch (678-803)
6 Millimeters
- New Petite Punch (678-805)
4.5 Millimeters



The Petite Punch cuts a 4.5mm half-moon cutout in an aligner for relief of the plastic around bonded buttons used for elastics.



The Petite Punch can also be used to "nip away" plastic at the edge of aligners to provide relief from soft tissue impingement or irritation.

THE CLOCKWISE WEDGE

678-808

The Clockwise Wedge is used to produce a wedge-shaped indent in an aligner at the facial and at the opposite line angle lingual for a specific tooth to create a rotational couple. Used to create a clockwise rotation.



The Clockwise Wedge is used to produce a wedge shaped indent into the line angle of the facial and on the opposite line angle of the lingual plastic for a specific tooth to create a rotational couple.

THE COUNTER CLOCKWISE WEDGE

678-807

The Counter Clockwise Wedge is used to produce a wedge-shaped indent in an aligner at the facial and at the opposite line angle lingual for a specific tooth to create a rotational couple. Used to create a counter clockwise rotation.

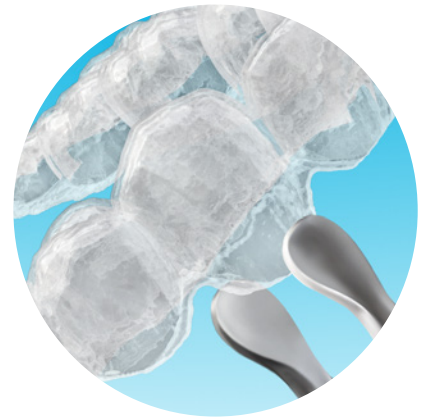
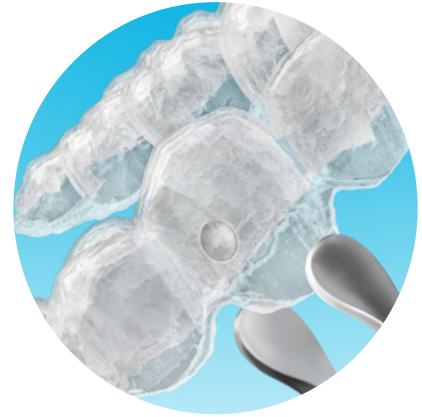


The Counter Clockwise Wedge is used to produce a wedge shaped indent into the line angle of the facial and on the opposite line angle of the lingual plastic for a specific tooth to create a rotational couple.

THE ERASER

678-811

The Eraser is designed to reverse or remove unwanted indents placed by other instruments in the Clear Collection™ Series. The Eraser is designed to flatten the plastic where a depression was inadvertently positioned, or the accent is no longer required.



The Eraser is designed to reverse or remove unwanted indents placed by other instruments in the Clear Collection™ Series.



The Clear Collection™ Instrument Set was designed by S. Jay Bowman, DMD MSD. Jay is a Diplomate of the American Board of Orthodontics, a member of the Edward H. Angle Society of Orthodontics, and on faculty of four universities. He has published numerous articles and book chapters, developed several orthodontic inventions, and provided lectures on orthodontics around the world. Jay has maintained a clinical practice in Kalamazoo/Portage, Michigan for over 30 years.

CLEAR COLLECTION™ FOR CLEAR ALIGNERS

Part Code	Description
678-800	The Tear Drop
678-801	The Vertical
678-802	The Horizontal
678-803	The Hole Punch
678-804	The Spot
678-805	The Petite Punch
678-807	The Counter Clockwise Wedge
678-808	The Clockwise Wedge
678-811	The Eraser

For more
information and
instructional
videos visit
[Hu-Friedy.com/
Clear-Collection](https://www.hu-friedy.com/Clear-Collection)

Hu-Friedy Mfg. Co., LLC • 3232 N. Rockwell St., Chicago, IL 60618 • U.S.A.
Telephone: **1-800-Hu-Friedy** (1-773-975-6100)

All company and product names are trademarks of Hu-Friedy Mfg. Co., LLC, or its affiliates or related companies, unless otherwise noted.
©2021 Hu-Friedy Mfg. Co., LLC. All rights reserved. HFO-2713/0321